



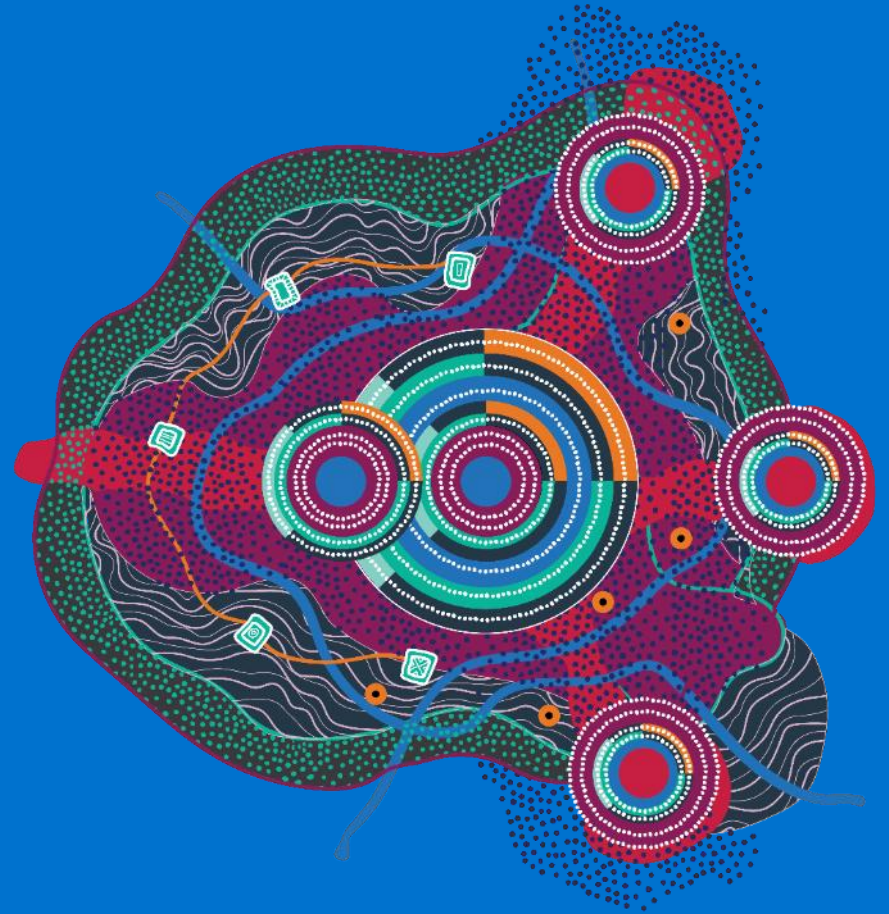
D2A to APRA Connect Migration

Alternate submission process (ASP) to
submit returns to APRA



Acknowledgement of Country

'Together, Connected to Culture' artwork by David Williams of Gilimbaa.



Agenda

- 1 Introduction
- 2 D2A Update
- 3 Transition to APRA Connect and Interim Reporting Processes
- 4 Overview of the Alternate Submission Process
- 5 Common Submission Issues Identified to Date
- 6 Online Support Resources
- 7 Approach to Revising Migration Timeline
- 8 UI Update

Our Speakers Today

- Michael Murphy
- Padma Srivatsan

Housekeeping



- All participant **microphones** are muted



- All **participant** cameras are off



- This session is being **recorded**

D2A Update

- Direct to APRA (D2A) was taken offline on Friday 20 March following the identification of security vulnerabilities through a routine penetration test.
- This was a precautionary action and is in line with APRA's low risk tolerance for system vulnerabilities that may expose APRA or regulated entities to attacks.
- APRA has advised organisations that use D2A to immediately uninstall the D2A client as an additional precautionary measure.
- APRA has conducted forensic reviews of its systems that have not detected any evidence of security breaches or exploitations.



Transition to APRA Connect and Interim Reporting Processes

- APRA is accelerating its multi-year program to migrate all data collections from D2A to the APRA Connect portal, which includes enhanced user experience, performance and security features.
- APRA has also put in place an Alternate Submission Process (ASP) to ensure continuity and security of the data we collect on behalf of industry, and for other agencies and the public.
- APRA acknowledges that the alternate submission process is sub-optimal and introduces manual steps that may impact the quality of data submitted.

Overview of the Alternate Submission Process

For D2A returns not yet available as standard returns in APRA Connect



1. How entities submit data:

- APRA creates an ad hoc return in APRA Connect
- Submit via APRA Connect in:
 - XML (preferred) / XBRL (ZIP upload)
 - Excel (APRA D2A templates, if permitted)



2. Submission requirements:

- Submit at return level (not by form)
- Submit all required forms (incl. nil) together
- ZIP naming: follow APRA guidance



3. What happens next:

- APRA processes submission and issues a D2A receipt
- Validation issues: standard data query process



Overdue:

- Submitting the ad hoc file in APRA Connect counts as submitted (no overdue notice)

Common Submission Issues Identified to Date

Incomplete return submissions

- Forms sent individually (not as a return)
- Missing forms (including nil forms)

Incorrect use of Excel templates

- Templates not from APRA website
- Entities using APRA Connect template instead of the D2A excel template
- Entity name/ABN missing on forms
- Template layout changed – rows and columns added/removed

Data entry and formatting errors

- Wrong scale factors being used
- Drop-down values don't match PET
- Symbols used instead of numbers (% , - , ())

Submission errors

- XML/XBRL not zipped for upload
- Multiple Excel workbooks for one return
- Resubmit as an “Ad hoc file upload” return
- Submit at return level (not form level)
- Single ZIP file (use required naming convention)

Online Support Resources

APRA has created an internet page with support the transition - [Alternative submission arrangements for D2A collections | APRA](#)

This page includes:

FAQs

Answers to your frequently asked questions

Excel upload templates

For uploading data

Detailed instructions on the ASP

More content will be added over the course of the transition. Please let us know if there are any areas you would like expanded.

Approach to Revising APRA Connect Migration Timeline

- APRA is considering accelerating the migration to APRA Connect for all industries by bringing forward the release of some forms and reducing the amount of time those forms will be available in external test prior to the commencement of reporting.
- With this acceleration proposal, we would still allow any entities not ready to submit via APRA Connect to continue with the manual alternative submission process for a period of time.
- APRA is reaching out to seek feedback on the proposed acceleration.
- Following this engagement APRA will provide details of the acceleration.
- APRA welcomes any feedback via the DataAnalytics@apra.gov.au mailbox.

UI Update - APRA Connect New User Interface

- New APRA user interface rollout: early May.
- Entities will be notified before rollout.
- Updated guidance will be published on APRA's website closer to rollout.
- Change is look-and-feel only; functionality and workflows stay the same.

Thank you

Please send any questions to DataAnalytics@apra.gov.au