

Executive Board

Chair: John Lonsdale

Deputy Chair: Margaret Cole

APRA Member: Therese McCarthy Hockey

APRA Member: Suzanne Smith

**Executive Director,
General Insurance
& Banking**

Peter Diamond

**General Manager,
Banking Branch 1**

Tracey Bragg

**General Manager,
Banking Branch 2**

Declan Latimer

**General Manager,
Banking Branch 3**

Bernadette Donovan
(acting)

**General Manager,
General Insurance**

John Huijsen

**Executive Director,
Life & Private
Health Insurance &
Superannuation**

Jane Magill

**General Manager,
Superannuation
Branch 1**

Adrian Rees

**General Manager,
Superannuation
Branch 2**

Adrian Rees (job share)
James Douglas
(job share)

**General Manager,
Life and Private Health
Branch 3**

Nancy Ma

**General Manager,
Member Outcomes
Branch 4**

James Douglas

**Executive Director,
Cross-industry Risk**

Chris Gower

**General Manager,
Financial Risk**

Paul Tattersall

**General Manager,
Non-Financial Risk**

Alison Bliss

**General Manager,
System Risk**

Marion Kohler

**Executive Director,
Policy & Advice**

Peter Kohlhagen

**General Manager,
Advice & Approvals**

Simone Leas

**General Manager,
Policy**

Ian Beckett

**General Manager,
Resolution**

Pat Mahony

**General Counsel &
General Manager,
Legal**

James Calveley

**Executive Director,
Data, Technology
& Security**

Bruce Young

Chief Data Officer

Andy Robertson

**Chief Information
Officer**

Rogier Roelofs

**Chief Information
Security Officer**

Bianca Wirth

**Executive Director,
Chief of Staff &
Enterprise Services**

Clare Gibney

**General Manager,
Corporate Affairs**

Paula Hannaford

Chief Financial Officer

Eugene Jalba

Chief People Officer

Chris Lamb

**General Manager,
Strategy & Governance**

Ben Mowatt

**General Manager,
Supervision
Excellence**

Stuart Bingham

**Chief Risk Officer
(including Audit and
Assurance)**

Philip Wang

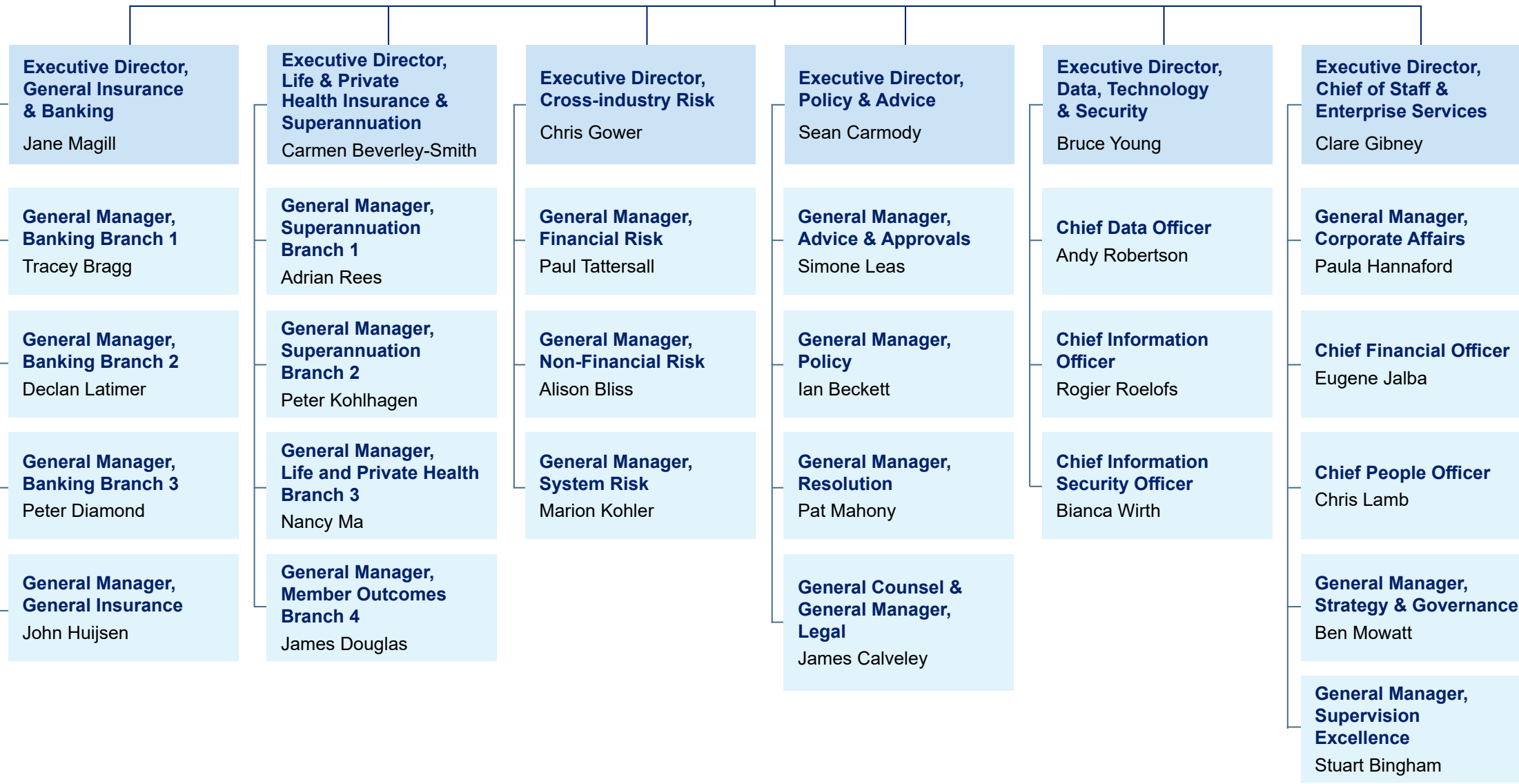
**General Manager,
Regulatory Affairs**

Sarah Nicholson

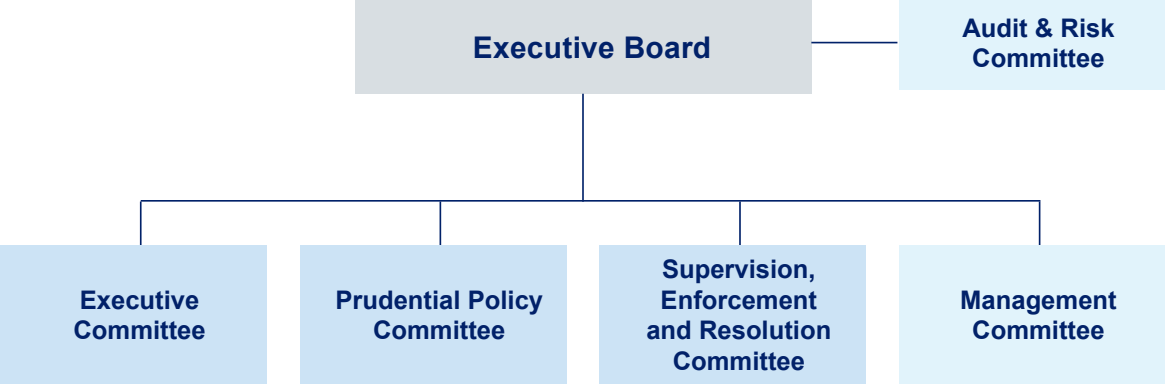
Executive Board
Chair: John Lonsdale
Deputy Chair: Margaret Cole
APRA Member: Therese McCarthy Hockey
APRA Member: Suzanne Smith

Chief Risk Officer
Philip Wang

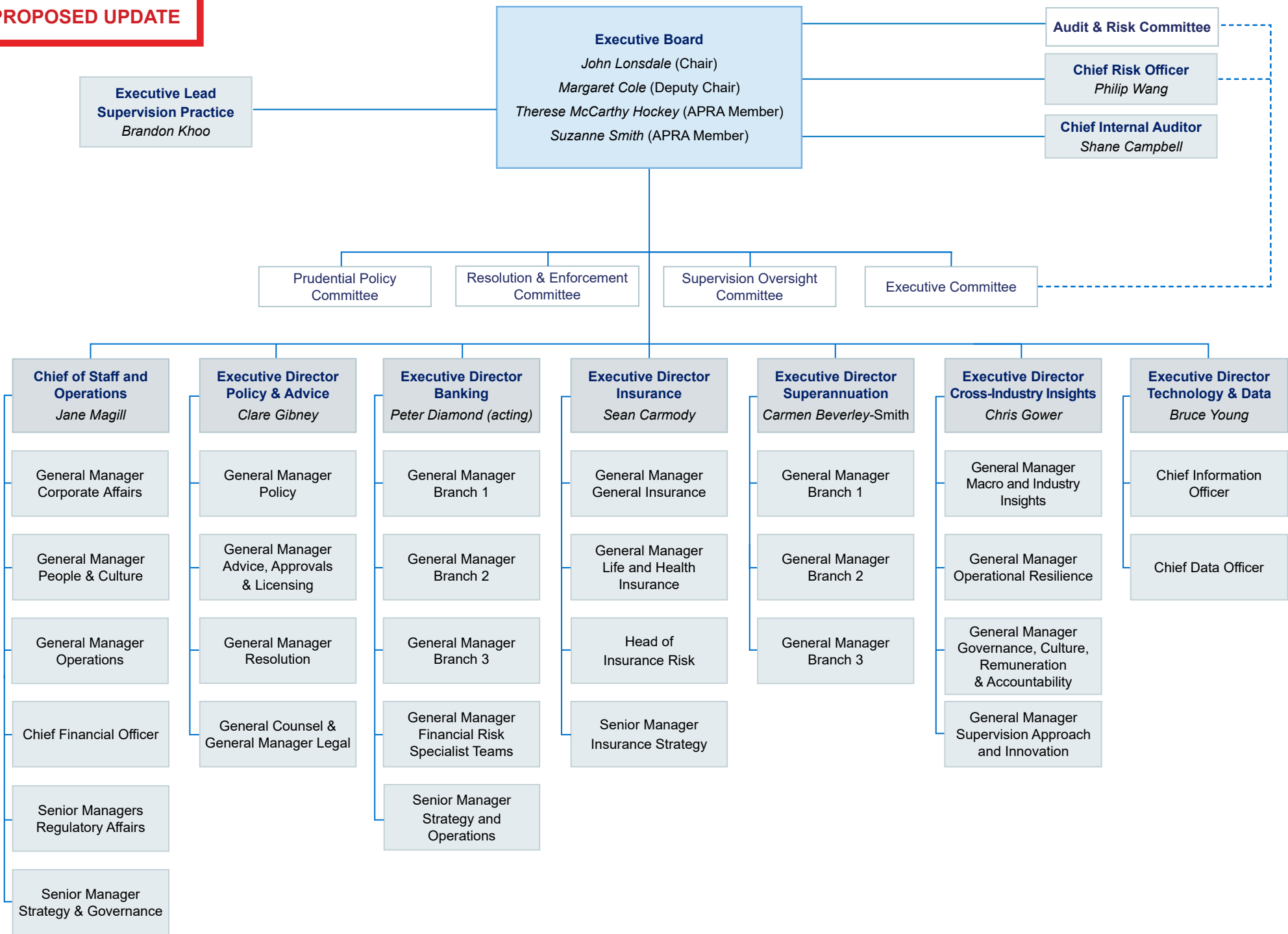
Chief Internal Auditor
Philip Wang (interim)



2025 Committees for AR



PROPOSED UPDATE

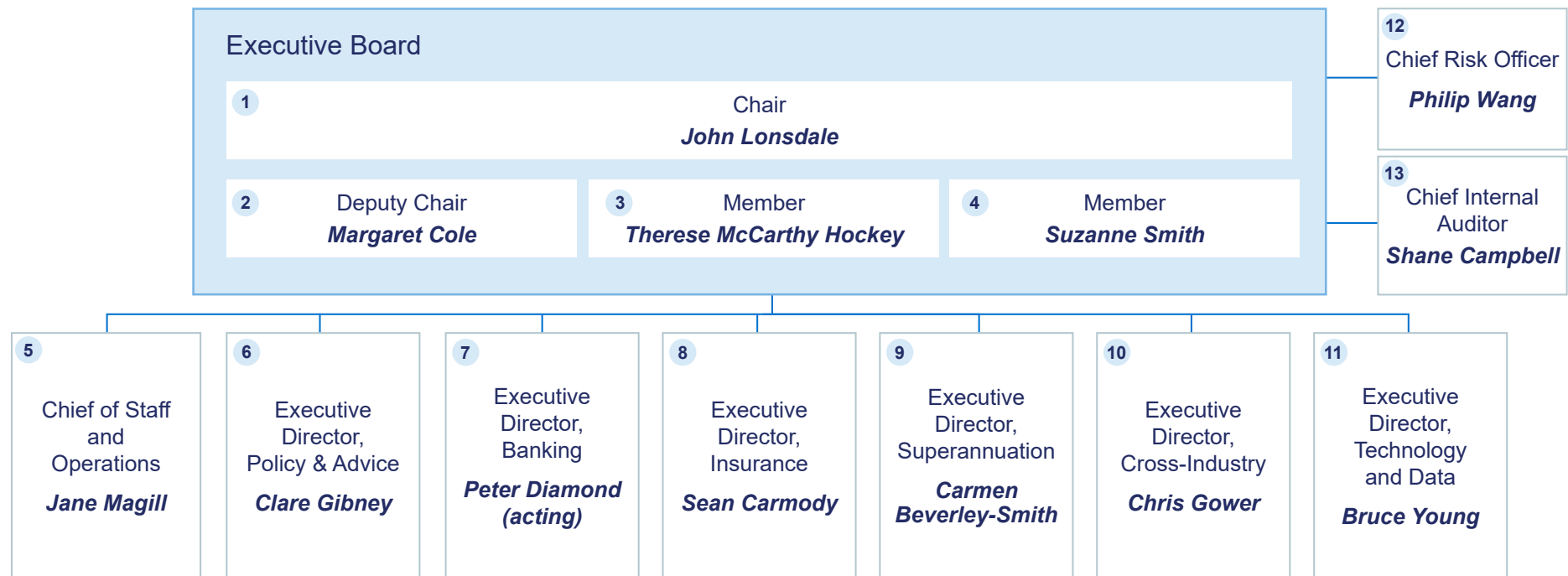


BRESHNA

Executive Board
John Lonsdale (Chair)
Margaret Cole (Deputy Chair)
Therese McCarthy Hockey (APRA Member)
Suzanne Smith (APRA Member)

Audit & Risk Committee





- 1 Accountable authority of APRA, ultimately responsible for APRA's operations including leading, governing and setting the strategic direction of APRA. Lead the oversight of matters related to financial stability.
- 2 Lead the oversight of prudential regulation and supervision of Australia's superannuation industry and APRA's policy direction.
- 3 Lead the oversight of prudential regulation and supervision of Australia's banking industry and APRA's policy direction.
- 4 Lead the oversight of prudential regulation and supervision of APRA's general, life and private health insurance, and friendly society industries and contribute to APRA's policy direction.
- 5 Senior executive responsibility for the management and control of APRA's corporate affairs, regulatory affairs, strategy and governance, and enterprise services functions.
- 6 Senior executive responsible for the management and control of APRA's Policy and Advice division including: policy development; advice and approvals; legal and investigations; resolution; and licensing.

- 7 Senior executive responsibility for the management and control of APRA's Banking Division and prudential supervision of all banking institutions.
- 8 Senior executive responsibility for the management and control of APRA's Insurance Division and prudential supervision of all general, life and private health insurers.
- 9 Senior executive responsibility for the management and control of APRA's Superannuation Division and prudential supervision of all superannuation trustees and funds.
- 10 Senior executive responsibility for the management and control of APRA's Cross-Industry Division including specialist functions in: operational resilience; accountability regime; and governance, culture, remuneration and accountability.
- 11 Senior executive responsibility for the management and control of APRA's Technology and Data division including technology and data infrastructure to support the wider business. This includes the collection, management, storage, protection, sharing and reporting of data.

- 12 Senior executive responsible for the management and control of APRA's risk management, compliance and security functions.
- 13 Senior executive responsibility for the management and control of APRA's internal audit function.