



# D2A to APRA Connect Migration

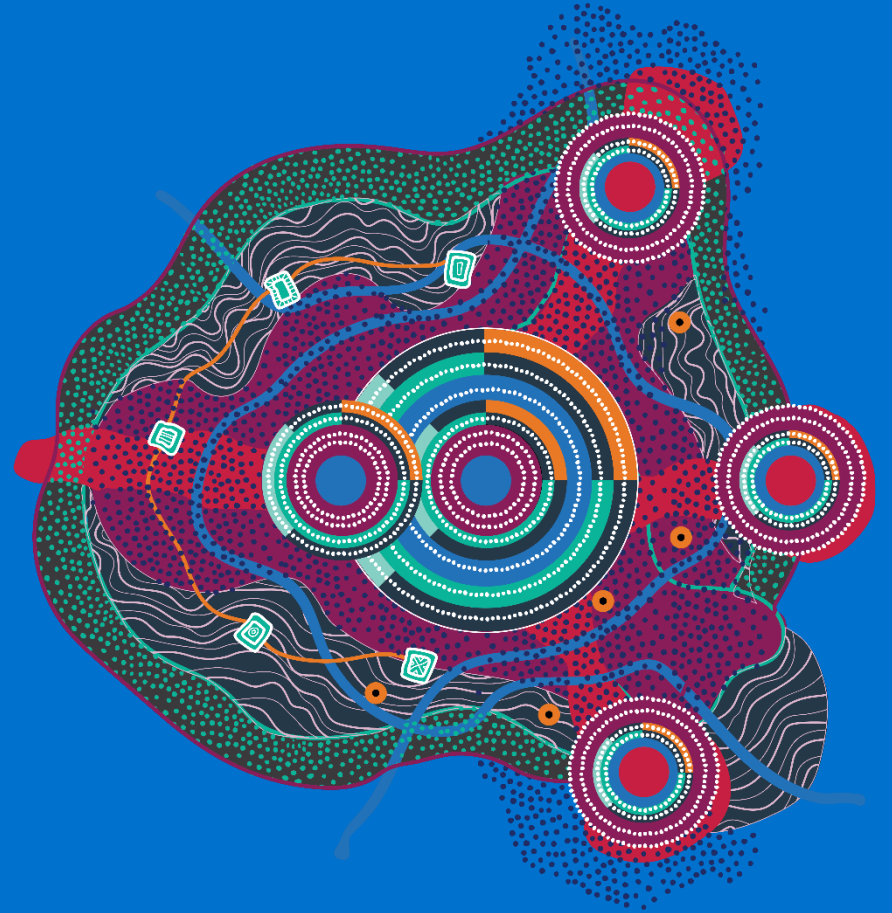
Webinar

19 March 2025



# Acknowledgement of Country

*'Together, Connected to Culture' artwork by David Williams of Gilimbaa.*



# Agenda

- 1 Welcome and today's session
- 2 Migrating D2A collections to APRA Connect
- 3 Demonstration - Large Exposures
- 4 External test and Excel template
- 5 Other information & next steps
- 6 Q&A

## Our speakers

- Michael Murphy
- Belinda Gibbons
- Padma Srivatsan

# Before we begin



Please submit your questions at any time through the 'chat' function



All microphones are automatically muted to minimise unexpected interruptions, until the Q&A component of the session



The 'raise hand' functionality will be disabled until the Q&A component of the session



This session is being recorded

# Introduction

Direct to APRA (D2A) was established in 2001, the continued use of outdated technology is impacting both the industry and APRA.

APRA introduced APRA Connect, in 2021 as the strategic platform for data collections. APRA Connect provides enhanced security and improves the data collection processes.

Since then, collections have gradually transitioned to APRA Connect in line with changes to prudential policy.

To address the rising cost and risk of maintaining D2A, APRA is migrating all remaining collections to APRA Connect, with an objective of decommissioning D2A by December 2027

## Benefits of this change:



Single data collection portal to streamline data collection process



Removes the need to have aging D2A client hosted on industry infrastructure

# Approach

## **Approach:**

- APRA recognises this the scope of this change is wide reaching.
- To minimise the impact to industry APRA is not changing the collections as part of the migration. There are no plans to change data scope, format, grain, frequency in the data collection forms.
- Validations will remain the same, although data types validations will be incorporated into the model.
- The reporting standards will not be changing as part of this migration.

## **File submission change:**

- All entities will be able to reuse the existing D2A XML files to load the submissions to APRA Connect
- In line with existing APRA Connect collections, submissions using XBRL files will not be supported.
- Support is being added for Excel uploads

# Migration timeline (Indicative)

The migration will occur in phases from now until December 2027, with collections organised into logical groups. The dates listed below indicate when the forms will be accessible in the external test environment.

**August 2024**

Migration approach announced in Corporate Plan



**Q1 2025**

ADI - Large Exposures forms in Test



**Mid 2026-Q1 2027**

Superannuation, General and Private Insurance forms will be progressively made available in the Test environment



**March 2025**

Industry engagement on project approach

**End 2025-Mid 2026**

Most ADI forms will be progressively made available in the Test environment including EFS forms submitted by RFCs

**Mid 2027**

Final ADI forms in Test



# Implementation

## **Cut Over to APRA Connect**

- The exact date of cutover is still to be determined. APRA will provide entities with sufficient lead time before transitioning the collection of data from D2A to APRA Connect
- There will be no parallel run, however returns will be available in external test for entities to familiarise with the returns
- There will be additional sessions with entities that don't currently use APRA Connect later in the year
- APRA is still considering the approach for resubmissions

## **Collections that are changing**

- To accommodate this piece of work, APRA has reduced the number of new collections in development.
- Work will continue collections for topics that have been identified as policy priorities, however dependent on when those collections will go live APRA may also migrate existing versions of the form.



# Using APRA Connect to submit D2A collections

## **Successful proof of concept conducted late 2024**

- APRA successfully used the ARF 221.0 Large Exposures and ARF 221.1 Large Exposures – Foreign ADI forms as a proof of concept for the migration approach.
- You will be able to use the Test environment to become more familiar with uploading D2A XML into APRA Connect

## **Minimal changes to preparing your data for submission:**

- All entities can continue to **use the existing D2A XML** files to load the data into APRA Connect
- Manual entry will also be available

## **Adding new option to upload via Excel**

- Feedback from industry about the popularity of Excel to prepare and submit data
- We will be releasing a video demonstrating how to upload data via Excel along with a sample template

## **What can entities expect?**

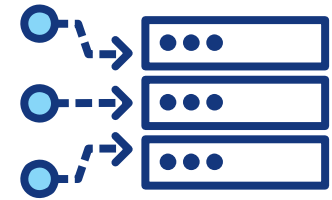
The following video demonstrates the process of uploading the Large Exposures form into APRA Connect.

# Demonstration for Large Exposures proof of concept



# External test and Excel template

- **Large Exposures forms for period ending 31 December 2024 will be available in external test for ADIs later today.**
- **Video and Excel template will be available for entities to start testing the External Test Environment**
  - APRA is not changing the collections as part of the migration. There are no plans to change data scope, format, grain, frequency in the data collection forms.
- **Purpose of external test**
  - Helps entities to get familiar with APRA Connect in test environment
  - Use only non-production data
  - Provide your feedback or send questions via [DataAnalytics@apra.gov.au](mailto:DataAnalytics@apra.gov.au)



# Q & A

This section will not be recorded

# Thank you

Please send your questions or concerns to [DataAnalytics@apra.gov.au](mailto:DataAnalytics@apra.gov.au)